

Onyx Series – Manual

User Guide

INTRODUCTION

The Onyx vibration isolation table is designed to isolate sensitive equipment from vibrations caused by foot traffic, HVAC systems, nearby operating machinery, etc. It consists of a stainless-steel tabletop supported by four pneumatic isolators, which are easily inflated using a hand pump or other air source. When properly inflated, these isolators will reduce the transmission of vibrations to the tabletop, providing a vibration-free work surface for sensitive equipment.

INSTALLATION PROCEDURES

1. Place the Onyx vibration isolation table on a flat and level surface. Be sure the surface can safely support the weight of both the Onyx and the equipment to be placed on it.
2. Place equipment on the Onyx so that the weight is balanced and evenly distributed.
3. Remove the valve covers.
4. Use a pump (one provided) to pump air through each valve until the Onyx rises to a height of approximately 2.3 inches (59 mm). The diagram below illustrates the controls of each valve.

IMPORTANT: Do not exceed 70 psi (0.5 MPa, 5 kg/cm²), Onyx's maximum pressure.

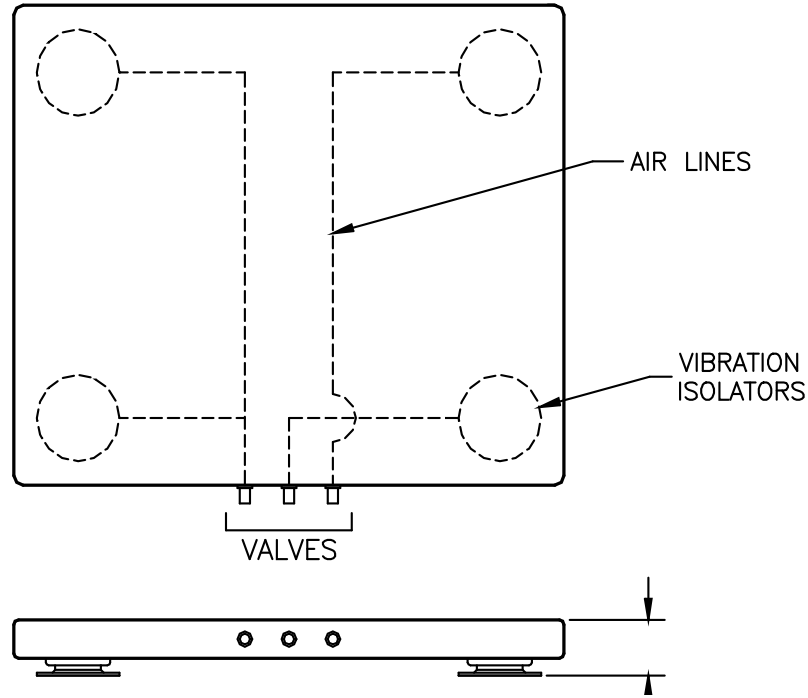
5. Level the Onyx to its optimal height range of $2.32 \pm .11$ inch (59 ± 3 mm). For best performance, maintain the tabletop uniformly leveled by inserting or bleeding air through each of the valves.

NOTE: Practically speaking, lower operating height provides better vibration isolation.

However, it is recommended to operate at mid height range to achieve optimal sway space.

6. Replace the valve covers.
7. Check the Onyx approximately every two weeks to ensure it is operating at its optimal height. Should adjustments be necessary, repeat steps 3 to 6.





****PLEASE NOTE** - Onyx – 6M and Onyx – 7M have three vibration isolators;
Onyx – 8M has four vibration isolators

General Specifications

Model Number	Onyx – 6M	Onyx – 7M	Onyx – 8M
Dimensions (In./mm)	L 16 x D 17 x H 2.3 in. (406 X 531 X 58 mm)	L 20 x D 24 x H 2.3 in. (508 x 609 x 58 mm)	L 32 x D 24 x H 2.3 in (812 x 609 x 58 mm)
Table Weight (Lbs/Kg)	47 Lbs (21.3 Kg)	77 Lbs (35 Kg)	110 Lbs (50 Kg)
Max. Load Capacity (Lbs/Kg)	150 Lbs	150 Lbs	200 Lbs
Natural Frequency (Hz)	Vertical: less than 2.5 at max. load Horizontal: less than 2.5 at max. load		
Leveling Type	Manual		
Surface Top	Type 304 stainless steel		

