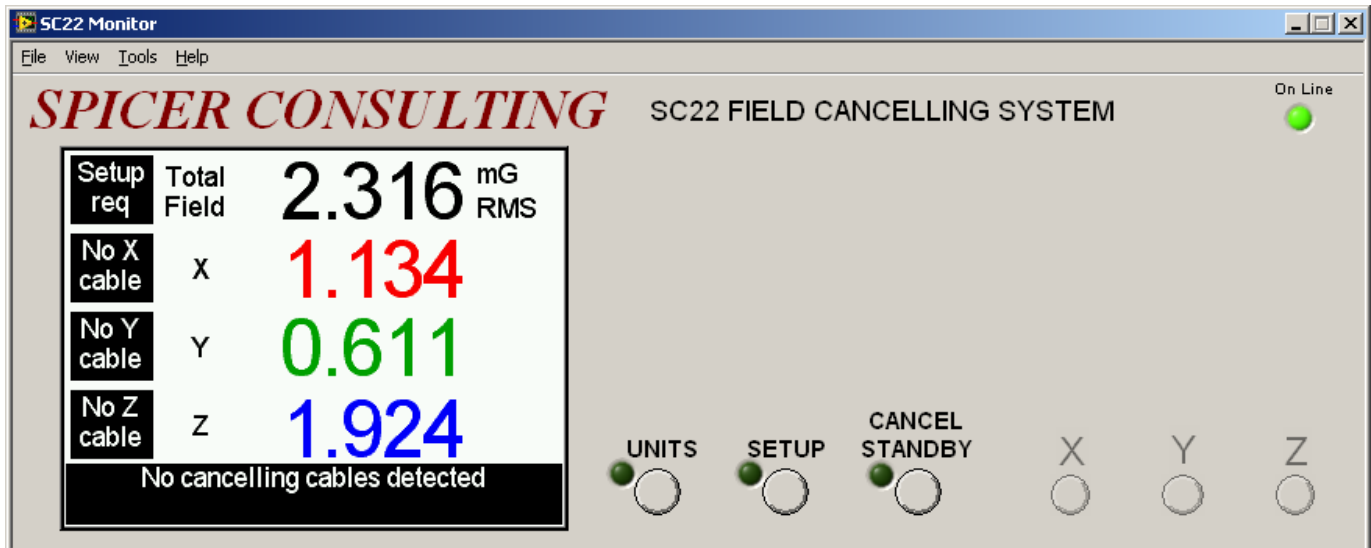


## SC22 Monitor Software



- Remotely view the SC22 front panel display.
- Remotely control the SC22 using the front panel buttons.
- Display a chart of the SC22 magnetic field readings.
- Log the SC22 readings to a text file for subsequent viewing in SCPlot or a spreadsheet.
- Send email alerts under the following conditions:
  - SC22 off line
  - Field not Ok
  - X Y or Z field trip
  - SC22 Message
- Includes a USB cable to connect the SC22 Control unit to a PC running Microsoft Windows® XP/Vista/7.

### Overview

The SC22 is a Magnetic Field Cancelling System that stabilises the X, Y and Z ambient field and restores the resolution and accuracy of electron beam microscopes and other tools. It displays the field from its precision AC magnetic field sensor on its front panel display. It also indicates whether the system is set up, whether the field is OK, or whether a field component tripped above a preset level.

The SC22 Monitor is a program for Microsoft Windows® PCs that can remotely monitor and control the state of the SC22 via a USB cable.

It is also possible to connect the SC22 via an Ethernet-to-USB adaptor and use this program over a LAN or the internet. (The adaptor device must be obtained separately).

The software shows the front panel as it appears on the SC22 and allows you to operate the front panel buttons remotely. It can also chart the SC22 meter readings, log the readings to a text file and send email alerts when the SC22 indicates certain conditions.

## Features

- The SC22 Chart window shows a chart of the front panel meter readings. Individual traces may be turned on or off. The chart may be auto-scaled, zoomed or cleared.
- The SC22 Monitor can send an email when the SC22 goes off line, when the field is not Ok, the field on any axis exceeds the trip level, or when the SC22 generates an on-screen message. The recipient, subject line, mail server and return address are user configured.
- The SC22 Monitor can log the SC22 readings and status to a text file, which can be viewed in SCPlot. The SCPlot program is included. The text file may also be opened in a spreadsheet.

